

Product Sheet

H_SIGLEC15 CHO-K1 Cell Line

Catalog number: GM-C14335

Version 3.3.1.241128

Description	H_SIGLEC15 CHO-K1 Cell Line is a clonal stable CHO-K1 cell line that constitutively expresses the human SIGLEC15 and DAP12(TYROBP) genes, constructed using lentiviral technology.
Quantity	5E6 Cells per vial, 1 mL
Product Format	1 vial of frozen cells
Shipping	Shipped on dry ice
Storage Conditions	Liquid nitrogen immediately upon receipt
Target	Human_SIGLEC15 & Human_DAP12(TYROBP)
Gene ID/Uniprot ID	Q6ZMC9-1 & NP_003323.1
Host Cell	CHO-K1
Recovery Medium	F12K+10% FBS+1% P.S
Growth medium	F12K+10% FBS+1% P.S+4 µg/mL Puromycin+200 µg/mL G418
Note	None
Freezing Medium	90% FBS+10% DMSO
Growth properties	Adherent
Growth Conditions	37°C, 5% CO ₂
Mycoplasma Testing	The cell line has been screened to confirm the absence of Mycoplasma species.
Safety considerations	Biosafety Level 2
Note	It is recommended to expand the cell culture and store a minimum of 10 vials at an early passage for potential future use.

Materials

Reagent	Manufacturer/Catalogue No.
F12K	BOSTER/PYG0036
Fetal Bovine Serum	Cegrogen biotech/A0500-3010
Pen/Strep	Thermo/15140-122
G418	Genomeditech/ GM-040402
Puromycin	Genomeditech/ GM-040401
Anti-Siglec15 mIgG2a Antibody(5G12)	Genomeditech/ GM-24717AB

Figures

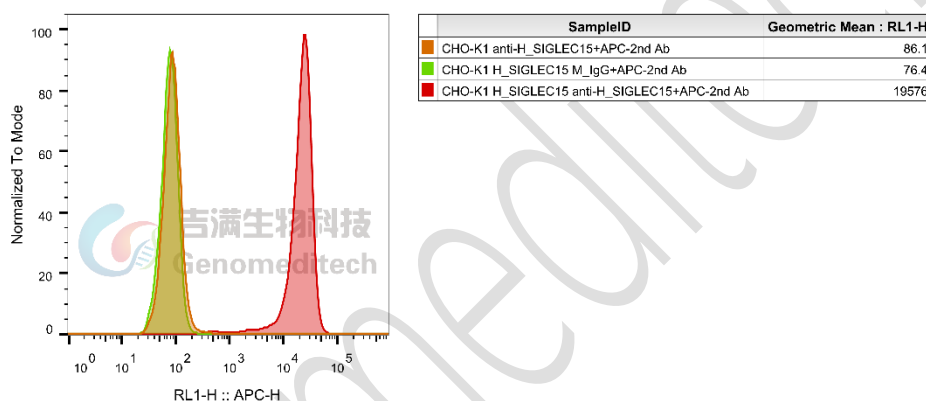


Figure 1 | H_SIGLEC15 CHO-K1 Cell Line (Cat. GM-C14335) was determined by flow cytometry using Anti-Siglec15 mIgG2a Antibody(5G12) (Cat. [GM-24717AB](#)).

Cell Recovery

Recovery Medium: F12K+10% FBS+1% P.S

To insure the highest level of viability, thaw the vial and initiate the culture as soon as possible upon receipt. If upon arrival, continued storage of the frozen culture is necessary, it should be stored in liquid nitrogen vapor phase and not at -70°C. Storage at -70°C will result in loss of viability.

- Thaw the vial by gentle agitation in a 37°C water bath. To reduce the possibility of contamination, keep the O-ring and cap out of the water. Thawing should be rapid (approximately 2 - 3 minutes).
- Remove the vial from the water bath as soon as the contents are thawed, and decontaminate by dipping in or spraying with 70% ethanol. All of the operations from this point on should be carried out under strict aseptic conditions.
- Transfer the vial contents to a centrifuge tube containing 5.0 mL complete culture medium and spin at approximately 176 x g for 5 minutes. Discard supernatant.

- d) Resuspend cell pellet with the recommended recovery medium. And dispense into appropriate culture dishes.
- e) Incubate the culture at 37°C in a suitable incubator. A 5% CO₂ in air atmosphere is recommended if using the medium described on this product sheet.

Cell Freezing

Freezing Medium: 90% FBS+10% DMSO

- a) Centrifuge at 176 x g for 3 minutes to collect cells.
- b) Resuspend the cells in pre-cooled freezing medium and adjust the cell density to 5E6 cells/mL.
- c) Aliquot 1 mL into each vial.
- d) Place the vial in a controlled-rate freezing container and store at -80°C for at least 1 day, then transfer to liquid nitrogen as soon as possible.

Cell passage

Growth medium: F12K+10% FBS+1% P.S+4 µg/mL Puromycin+200 µg/mL G418

For the first 1 to 2 passages post-resuscitation, use the recovery medium. Once the cells have stabilized, switch to a growth medium.

- a) Remove and discard culture medium.
- b) Briefly rinse the cell layer with PBS to remove all traces of serum that contains trypsin inhibitor.
- c) Add 1.0 mL of 0.25% (w/v) Trypsin-EDTA solution to dish and observe cells under an inverted microscope until cell layer is dispersed (usually within 2 to 3 minutes at 37°C).
- d) Note: To avoid clumping do not agitate the cells by hitting or shaking the flask while waiting for the cells to detach. Cells that are difficult to detach may be placed at 37°C to facilitate dispersal.
- e) Add 2.0 mL of growth medium to mix well and aspirate cells by gently pipetting.
- f) After centrifugation, resuspend the pellet and add appropriate aliquots of the cell suspension to new culture vessels.
- g) Incubate cultures at 37°C.

Subcultivation Ratio: A subcultivation ratio of 1:4 - 1:5 is recommended

Medium Renewal: Every 2 to 3 days

Notes

- a) After the stabilization of the cell condition, there will be fewer dead cells post-passage, the cell growth rate will tend to stabilize, cell morphology will become uniform, and the cells will appear robust.

Sequence

SIGLEC15 Q6ZMC9-1

MEKSIWLLACLAWLPTGSFVRTKIDTTENLLNTEVHSSPAQRWSMQVPPEVSAEAGDAAVLPCTFTTHPHRH
YDGPLTAIWRAGEPYAGPQVFRCAAARGSELCTALSLHGRFRLGNPRRNDLSLRVERLALADDRRYFCR
VEFAGDVHDRYESRHGVRLHVTAAPRIVNISVLPSPAHAFRALCTAEGEPALAWSGPALGNSLAAVRSPRE

GHGHLVTAELPALTHDGRYTCTAANSLGRSEASVYLFRFHGASGASTVALLLGGALGFKALLLLGVLAARAA
RRRPEHLDTPTPPRSQAQESNYENLSQMNPRSPPATMCSP

DAPI2(TYROBP) NP_003323.1

MGGLEPCSRLLLLPLLLAVSGLRPVQAQAQSDCSCSTVSPGVLAGIVMGDLVLTVLIALAVYFLGRLVPRGR
GAAEAATRKRITETESPYQELQGQRSDVYSDLNTQRPYYK

Related Products

CD24-Siglec10	
Flag-Cynomolgus_CD24 CHO-K1 Cell Line	H_CD24 CHO-K1 Cell Line
H_CD24 HEK-293 Cell Line	H_CD24 MC38 Cell Line
H_Siglec10 CHO-K1 Cell Line	MCF-7(CD24-Positive) Luciferase Cell Line
SIGLEC15	
Cynomolgus_SIGLEC15 CHO-K1 Cell Line	H_SIGLEC15 HEK-293 Cell Line
H_SIGLEC15 MC38 Cell Line	H_SIGLEC15 U2OS Cell Line
Mouse_SIGLEC15 CHO-K1 Cell Line	
Anti-Siglec15 mIgG2a Antibody(5G12)	
SIGLEC9	
Cynomolgus_SIGLEC9 CHO-K1 Cell Line	H_SIGLEC9 CHO-K1 Cell Line
H_SIGLEC9 HEK-293 Cell Line	
Anti-siglec9 mIgG1 Antibody(2D4)	
SIGLEC8	
H_SIGLEC8 CHO-K1 Cell Line	H_SIGLEC8 HEK-293 Cell Line
Olive Baboon_SIGLEC8 CHO-K1 Cell Line	
Anti-H_SIGLEC8 hIgG1 Antibody(1H10)	
SIGLEC3(CD33)	
H_CD33(SIGLEC3) CHO-K1 Cell Line	
Anti-H_CD33(siglec3) hIgG4 Antibody(Gemtuzumab)	

Limited Use License Agreement

Genomeditech (Shanghai) Co., Ltd grants to the Licensee all intellectual property rights, exclusive, non-transferable, and non-sublicensable rights of the Licensed Materials; Genomeditech (Shanghai) Co., Ltd will retain ownership of the Licensed Materials, cell line history packages, progeny, and the Licensed Materials including modified materials.

Between Genomeditech (Shanghai) Co., Ltd, and Licensee, Licensee is not permitted to modify cell lines in any way. The Licensee shall not share, distribute, sell, sublicense, or otherwise provide the Licensed Materials, or progenitors to third parties such as laboratories, departments, research institutions, hospitals, universities, or biotechnology companies for use other than for the purpose of outsourcing the Licensee's research.

Please refer to the Genomeditech Cell Line License Agreement for details.